



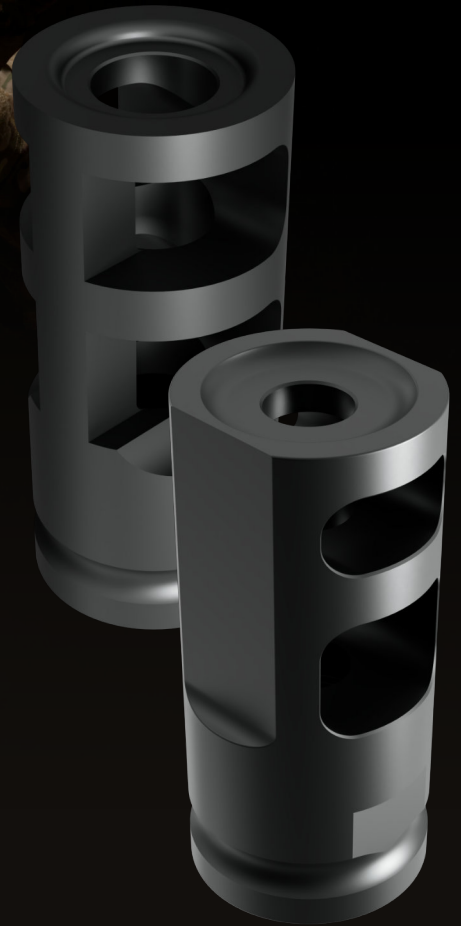
Muzzle brakes G.I.S. MB 223 & MB 308

G.I.S. MB 223

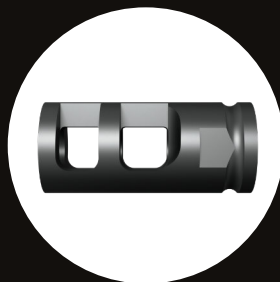
- Caliber: .223 Rem
- Length: 44,5 mm
- Thread: 1/2"x28
- Weight: 62 g
- Material: HTS Steel, nitrocarburized

G.I.S. MB 308

- Caliber: .308 Win
- Length: 49,5 mm
- Thread: 14x1, 14x1L, 5/8"-24
- Weight: 69 g
- Material: HTS Steel, nitrocarburized



G.I.S. MB 223 SIDE VIEW



G.I.S. MB 308 SIDE VIEW



LOCK NUT